

Hutchison-Hayes Separators, Inc.

Model B-214C Parts List With Diagrams

P.O. Box 2965 ♦ Houston, Texas 77252
3520 East Belt ♦ Houston, Texas 77015
(713) 455-9600 ♦ Fax (713) 455-7753

GENERAL DESCRIPTION

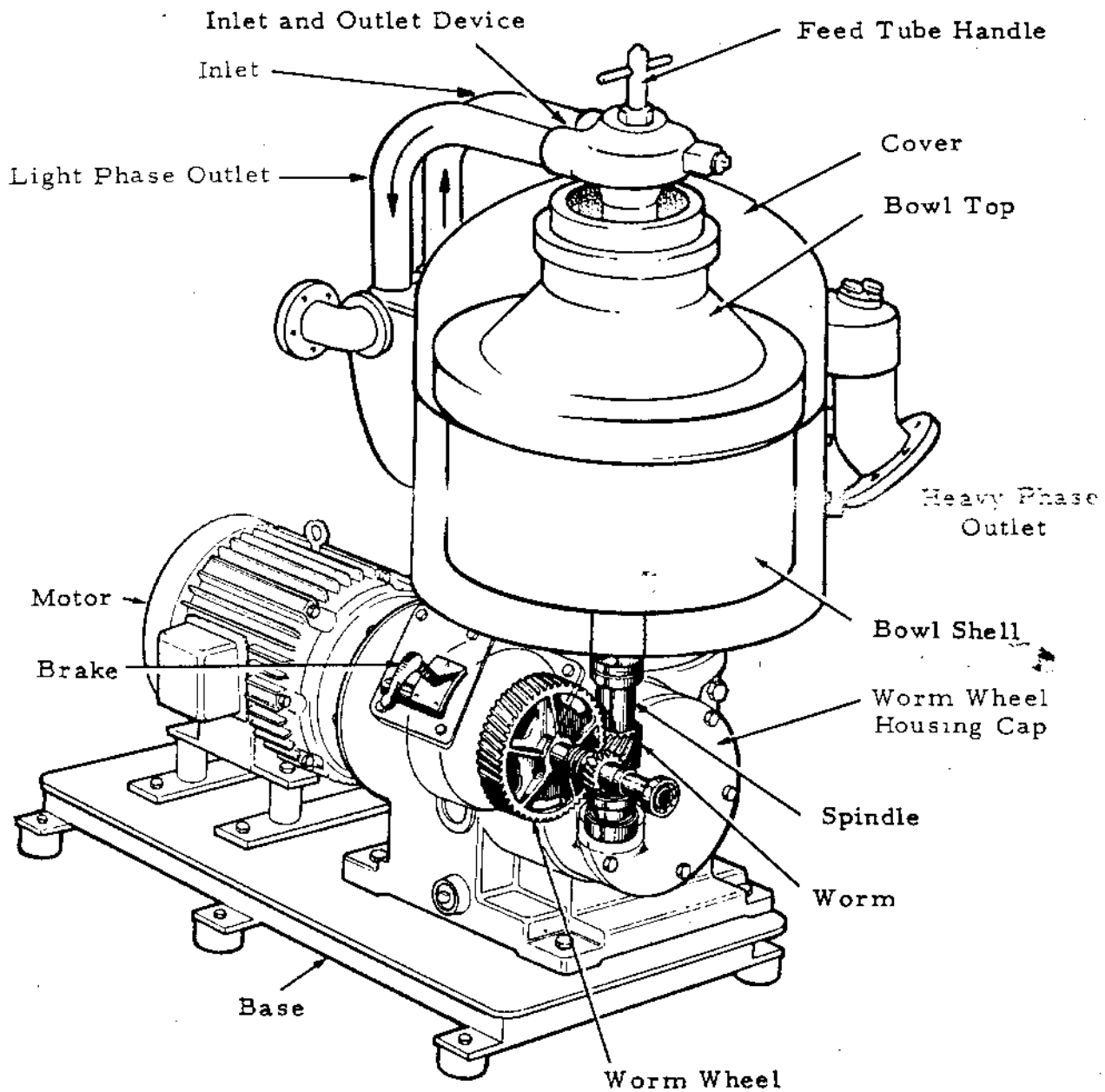
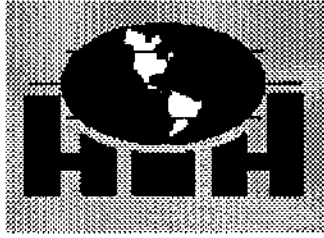


Figure 2



Hutchison-Hayes Separators, Inc.

This is a Spacer Page

P.O. Box 2965 ♦ Houston, Texas 77252
3520 East Belt ♦ Houston, Texas 77015
(713) 455-9600 ♦ Fax (713) 455-7753

MAIN FRAME

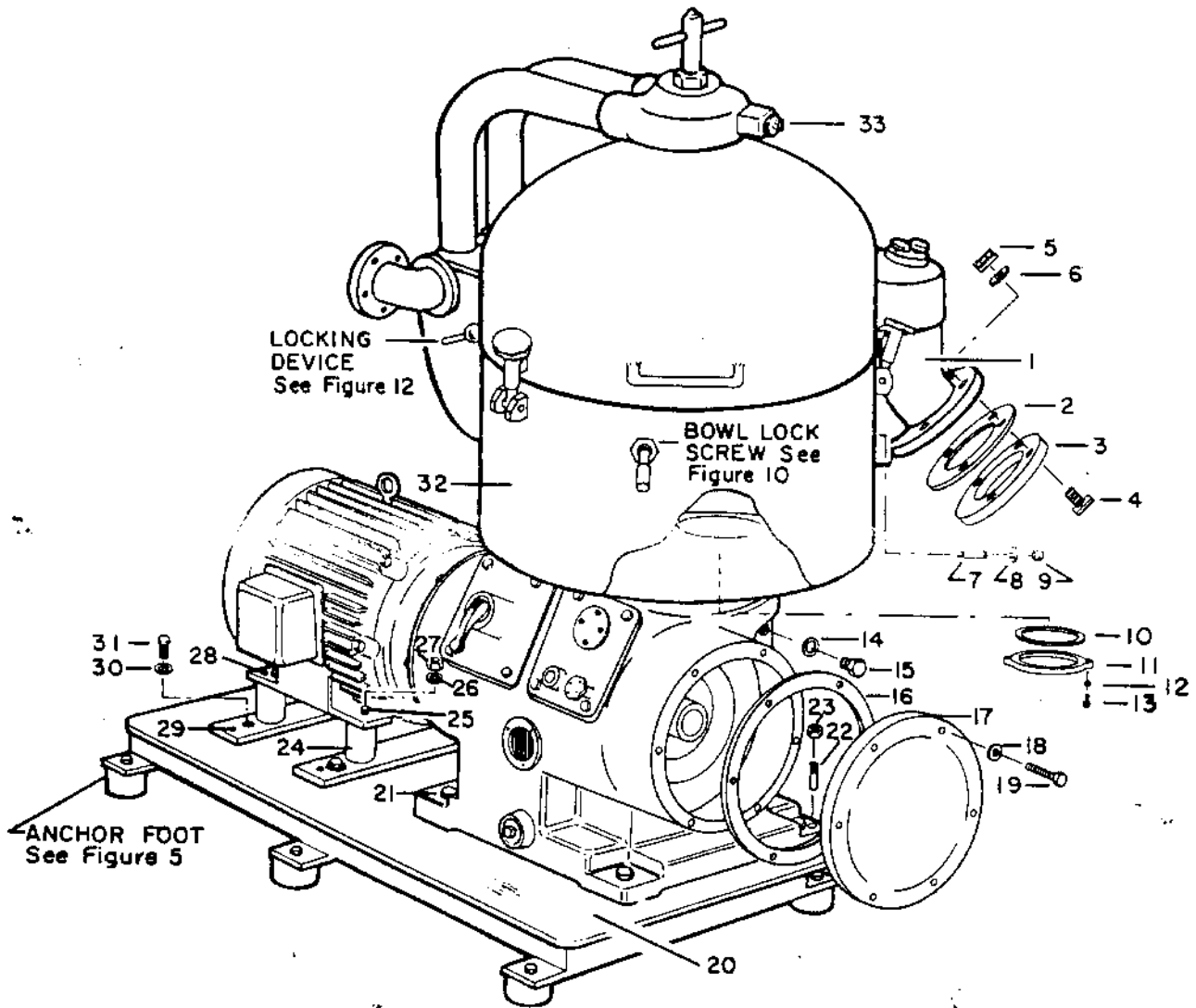
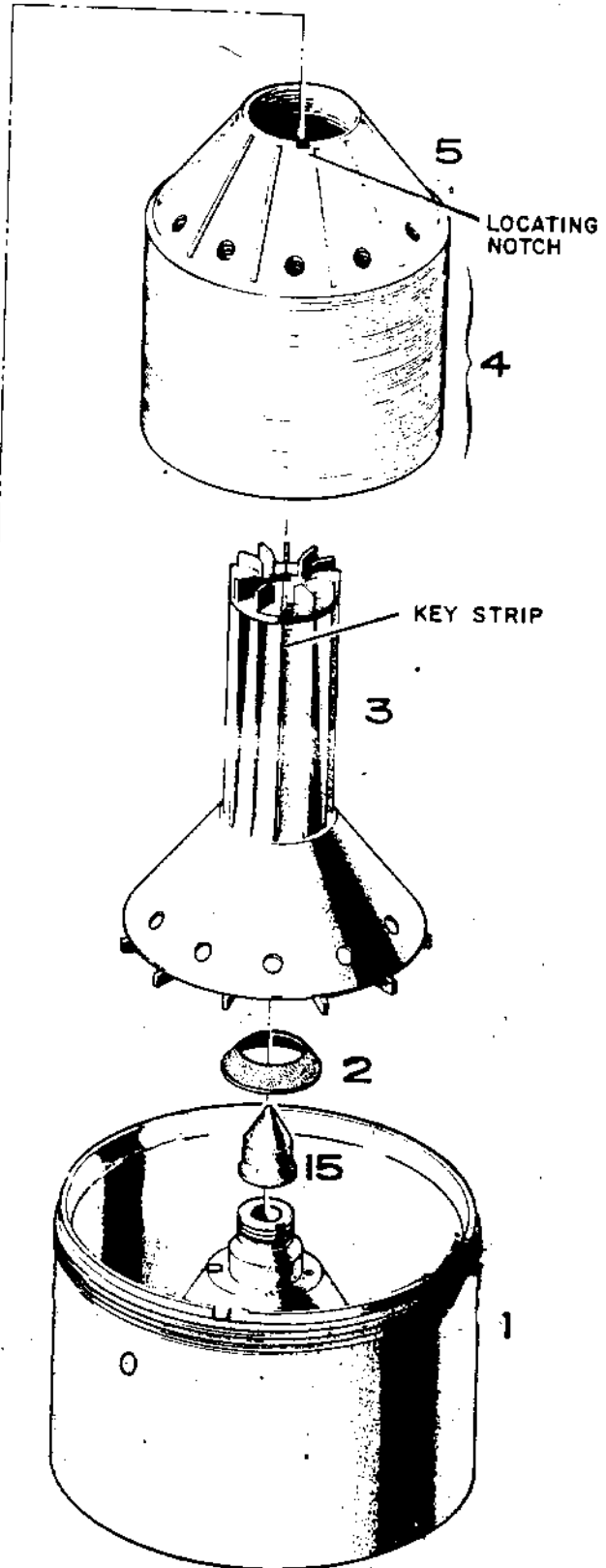
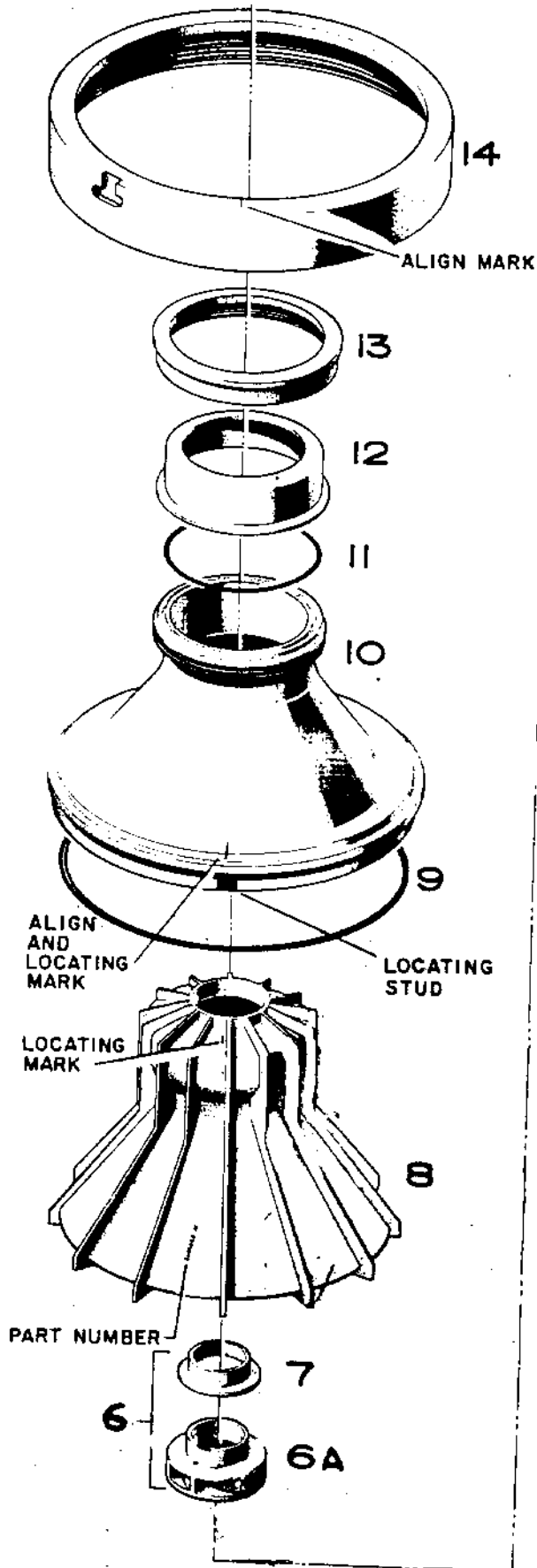


FIGURE 23

PARTS LIST - FIGURE 23

KEY. NO.	PART NO.	NAME	QTY.
1	8700275-01	Water Discharge Chamber	1
2	8700324-01	Flange Gasket	1
3	8700293-01	Water Discharge Flange	1
4]	0496	[Flange Screw	4
5]		[Flange Nut	4
6	10753	Lock Washer	4
7	8700325-01	Chamber to Frame Top Stud	2
8	10753	Lock Washer	2
9	32309	Nut	2
10	8700278-01	Flange Gasket	1
11	8700277-01	Drain Flange	1
12	9611	Lock Washer	2
13	25424	Screw	2
14	39147	Gasket	1
15	39364	Screw Plug	1
16	37216	W. W. Housing Cap Gasket	1
17	39222	Worm Wheel Housing Cap	1
18	38514	Washer	6
19	39100	W. W. Housing Cap Screw	6
20	39200	Machine & Motor Base	1
21	8000023-01	Machine to Base Screws	4
22	39422	Machine to Base Guide Pin	2
23	39110	Guide Pin Nut	2
24	[8700709-80	Motor Support] 2
	(For Motor Frame 364U)		
	[8700709-81	Motor Support] 2
	(For Motor Frame 326U)		
25	38837	Motor to Motor Support Stud	4
26	10753	Lock Washer	4
27	32309	Support Stud Nut	4
28	38350	Motor to Support Dowel Pin	2
29	38351	Support to Base Dowel Pin	4
30	10753	Lock Washer	4
31	36127	Support to Base Screw	4
32	8700830-01	Frame Top	1
	39368	Frame Top to Frame Bottom	
		Screw	6
33	36230	Thermometer Opening Plug	1



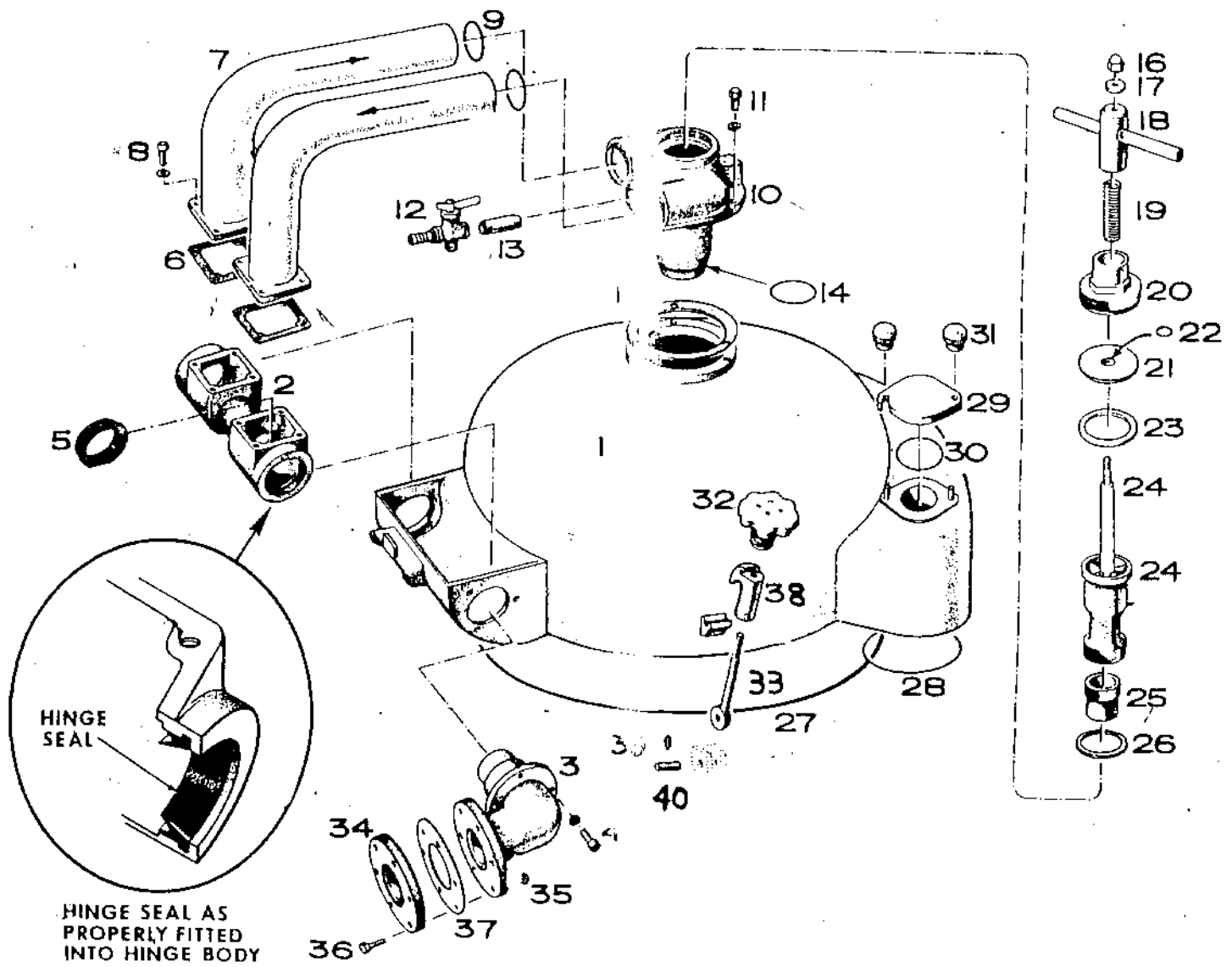
PARTS LIST - PLATE 1

KEY NO.	PART NO.	NAME	QTY.
1*		Bowl Shell	1
2	37303 37303	Strainer	1
3*		Tubular Shaft	1
4	8700678-80	Intermediate Disc	127
5	8700678-81	Int. Top Disc	1
6	38521	Paring Disc(Comp.)	1
6A**	8700844-80	Paring Disc(Sep.)	1
7**	37345	Protecting Collar	1
8*		Top Disc	1
9	37310	Bowl Ring	1
10*		Bowl Top	1
11	752437312	Rubber Ring	1
12	8700107-80	Discharge Ring(set)	1
13	37299	Coupling Nut	1
14*		Coupling Ring	1
15	8700508-01	Spindle Cap Nut	1
	8700700-80	Complete Bowl	

8700107-80 →
OR 870007-80

* Replacement of these parts necessitates return of the complete bowl to a De Lavař repair shop. The bowl must be dynamically balanced as a unit.

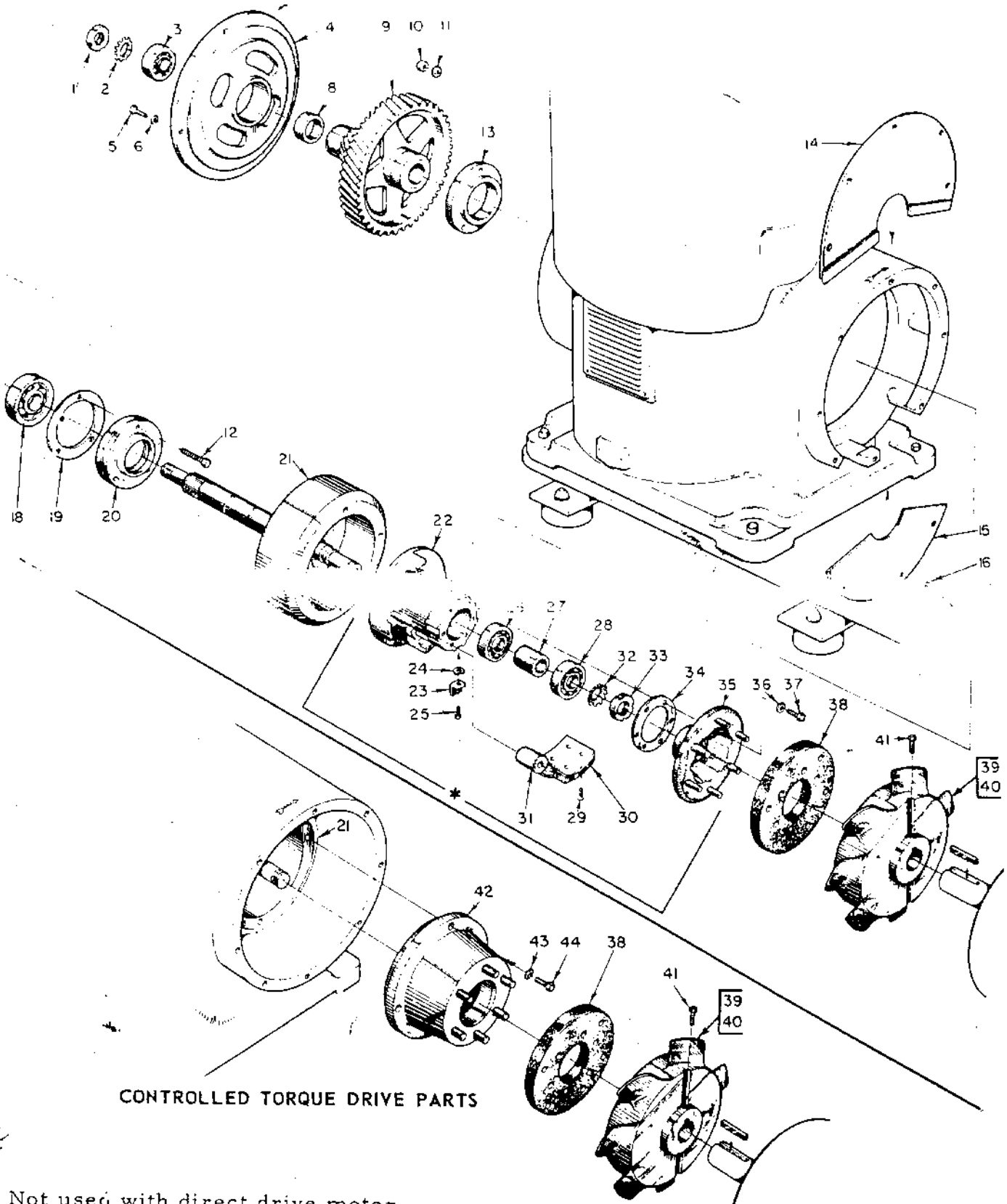
** When assembling paring disc and protecting collar, use Armstrong C3 Cement.



PARTS LIST - PLATE 2

KEY NO.	PART NO.	NAME	QTY.
1	38460	Cover	1
2	38535	Hinge Body	1
3	8701237-80	Inlet-Outlet Connection	2
4	31738	Screw	6
5	37464	Hinge Seal	2
6	37348	Gasket	2
7	37416	Inlet-Outlet Tubes	2
8	34901	Screw	8
9	37483	Rubber Ring	2
10	37488	Inlet-Outlet Housing	1
11	32310	Screw	3
12	38555	Water Cock	1
13	39932	Nipple	1
14	37309	Rubber Ring	1
15	37329	Spacers	as req'd.
16	31755	Nut	1
17	38514	Washer	1
18	37455	Feed Tube Handle	1
19	37459	Spring	1
20	37454	Cap Nut	1
21	8700384-01	Seal Plate	1
22	36780	Rubber Seal Ring	1
23	8700383-01	Seal Plate Gasket	1
24	38523	Feed Tube	1
25	8700483-01	Regulating Tube	1
26	37448	Gasket	1
27	37311	Bowl Casing & Frame Cover Rubber Ring	1
28	38488	Discharge Chamber Rubber Ring	1
29	37302	Observation Port Cover	1
30	37309	Rubber Ring	1
31	37301	Nut	2
32	37428	Handwheel	3
33	8700284-80	Stud	3
34	37443	Flange	2
35	36134	Nut	12
36	40141	Screw	12
37	12992	Gasket	2
38	38459	Clamping Lug	3
39	38847	Hinge Pin Cross-Pin	3
40	8700261-01	Clamp Stud Hinge Pin	3

HORIZONTAL DRIVE



CONTROLLED TORQUE DRIVE PARTS

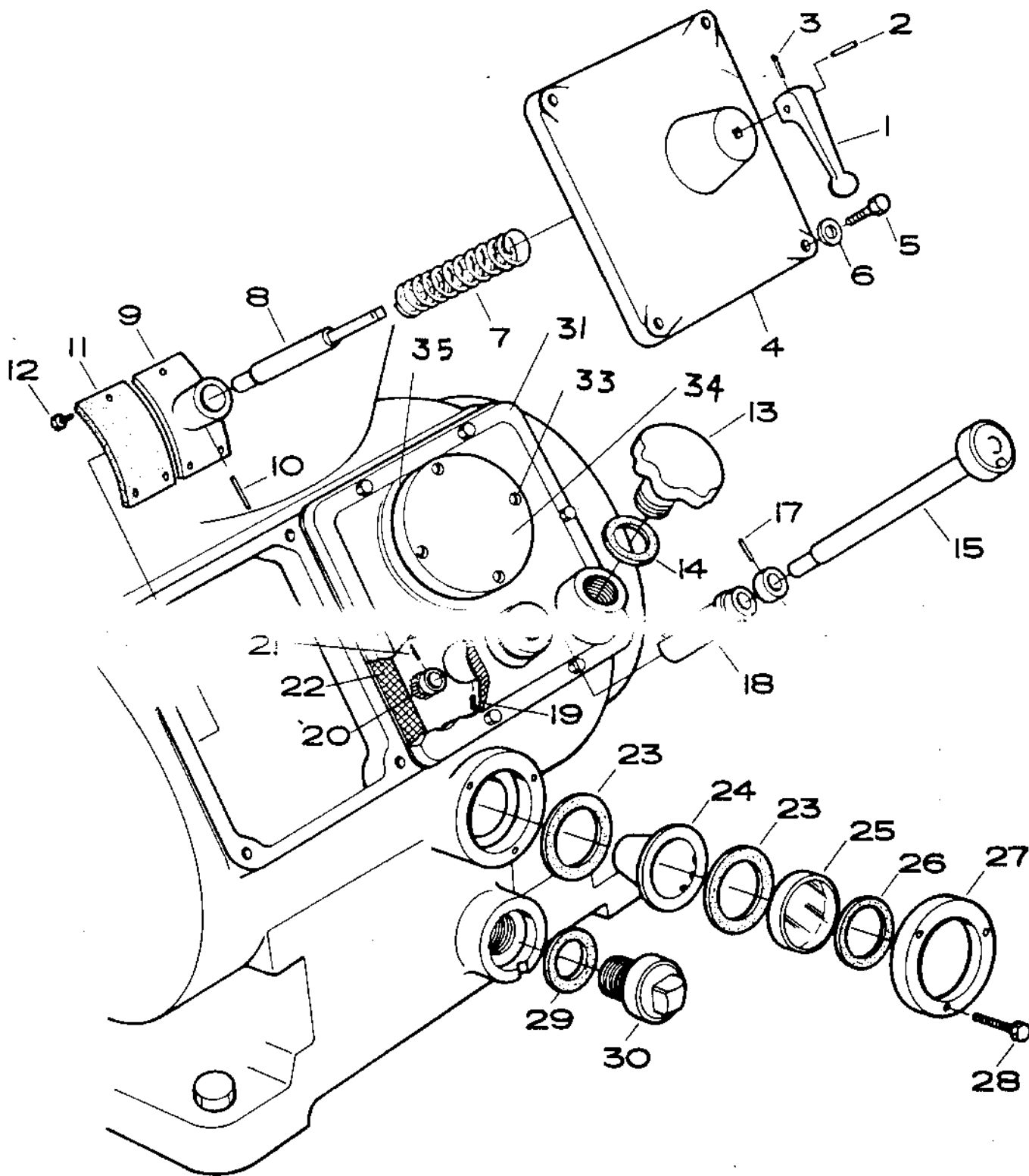
* Not used with direct drive motor

PARTS LIST - PLATE 3

KEY NO.	PART NO.	NAME	QTY.
1	39423	Lock Nut	1
2	14602	Lock Washer *	1
3	37524	Ball Bearing	1
4	39287	End Shield	1
5	39099	Screw	4
6	9611	Washer	4
8	8701470-01	Spacing Sleeve	1
9	8701178-01	Worm Wheel	1
10	39107	Nut	3
11	6478	Washer	3
12	39091	Screw	3
13	37287	Inner Cap	1
14	39448	Clutch Cover Plate, Upper	1
15	39449	Clutch Cover Plate, Lower	1
16	9611	Washer, Cover Screw	8
17	39102	Screw, Cover	8
18	37424	Ball Bearing	1
19	39446	Gasket	1
20	37283	Outer Cap	1
21	39445	Worm Wheel Shaft and Friction Clutch Housing	1
	39292	Friction Clutch Hub	1
23	37203	Friction Weight Stop	1
24	6478	Lock Washer, Stop Screw	4
25	37206	Screw, Stop	4
26	30765	Clutch Hub Ball Brg., Inner	1
27	37210	Sleeve	1
28	30293	Clutch Hub Ball Brg., Outer	1
29	38546	Screw	16
30	37214	Lining	4
31	37294	Friction Clutch Weight	4
32	14564	Lock Washer	1
33	39418	Lock Nut	1
34	37207	Gasket	1
35	37286	Clutch End Coupling	1
36	6478	Washer	6
37	39092	Screw	6
38	37215	Rubber Cushion	1
39	39378	Motor End Coupling (1-7/8" dia. shaft)	1
40	8701811-80	Motor end coupling (2-1/8" dia. shaft, for use with motor frame 364U)	1
41	39375	Set Screw	1
42	39593	Adapter	1
43	6478	Washer	4
44	39092	Screw, Adapter to Housing	4

* Not used with direct drive motor

FRAME PARTS



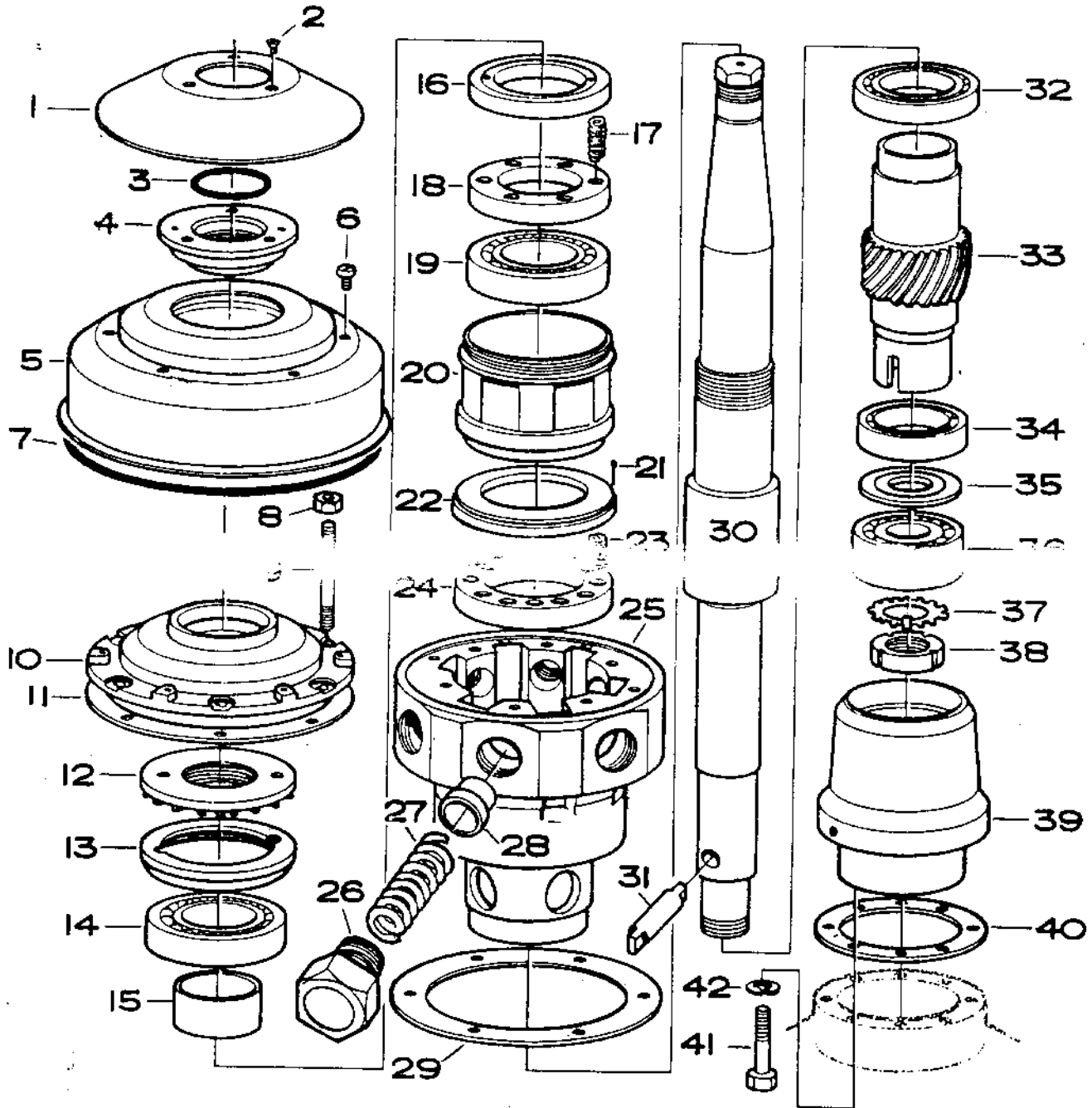
PARTS LIST - PLATE 4

KEY NO.	PART NO.	NAME	QTY.
1	38485	Brake Handle	1
2	39122	Pin	1
3	4528	Cotter Pin	1
4	39392	Brake Mounting Plate	1
5	39088	Screw	4
6	0482	Washer	4
7	37441	Brake Spring	1
* 8	39120	Brake Stem	1
* 9	39357	Brake Shoe	1
* 10	39419	Pin	1
* 11	39358	Lining	1
* 12	37231	Screw	3
13	39429	Oil Filler Cap	1
14	39146	Gasket	1
15	39427	Speed Indicator Shaft(comp.)	1
** 16	37228	Stop Collar	1
** 17	39407	Groove Pin	1
18	39149	Sleeve	1
19	39087	Stop Screw	1
20	39428	Pinion	1
21	39411	Taper Pin	1
22	39361	Gasket	1
23	39360	Gasket	2
24	39280	Stabilizer	1
25	36496	Sight Glass	1
26	39367	Gasket	1
27	39394	Retaining Ring	1
28	39083	Screw	3
29	30253	Gasket	1
30	39426	Plug	1
31	39393	Indicator Mounting Plate	1
	39598	Plate Plug	1
33	39412	Cover Plate Screw	4
34	39431	Cover Plate	1
35	39432	Cover Plate Gasket	1

*Included in Brake Shoe (Comp.), Part No. 39356

** Included in Speed Indicator Shaft (Comp.) Part No. 39427

VERTICAL DRIVE



PARTS LIST - PLATE 5

KEY NO.	PART NO.	NAME	QTY.
1	39223	Throw-off Plate	1
2	39086	Screw, Throw-off Plate	3
3	39270	Rubber Ring, Cover	1
4	39288	Protecting Cover	1
5	38455	Drip Shield	1
6	39085	Screw	6
7	38567	Rubber Ring	1
8	39109	Nut	6
9	39101	Stud	6
10	39444	Top Bearing Plate Cover	1
11	36502	Gasket	1
12	39406	Oil Fan	1
13	39292	Lock Ring	1
14	38507	Ball Bearing, Upper	1
15	38425	Spacer Sleeve	1
16	39046	Spring Holder	1
17	38509	Spring	6
18	39046	Spring Holder	1
19	37326	Ball Bearing, Lower	1
20	39293	Ball Bearing Housing	1
21	36448	Cotter Pin	1
22	39224	Wear Ring	1
23	36446	Spring	1
24	39229	Spring Support	1
25	39281	Top Bearing Plate	1
26	36454	Top Bearing Buffer	1
27	36453	Top Bearing Spring	1
28	36452	Top Bearing Buffer	1
29	36502	Gasket	1
30	8700193-01	Bowl Spindle	1
31	39443	Drive Pin	1
32	39242	Quill Ball Bearing, Upper	1
33	39069	Worm Quill	1
34	37328	Quill Ball Bearing, Lower	1
35	39127	Cover Plate	1
36	37423	Spindle Ball Bearing	1
37	22756	Ball Bearing Lock Washer	1
38	39417	Ball Bearing Lock Nut	1
39	39221	Step Bearing	1
40	39359	Gasket	1
41	39098	Screw	8
42	9611	Washer	8

PARTS LIST - PLATE 6

KEY NO.	PART NO.	NAME
1	37463	Bowl Top Coupling Nut Wrench
2	38540*	Coupling Ring Wrench
3	38433	Ball Bearing Lock Ring, Oil Fan and Protecting Cover Wrench
4	38548	Top Bearing Buffer Wrench
5	8700906-80	Top Ball Bearing Extractor
6	37469	Clutch Ball Bearing Mounting Tool
7	38543	Punch
8	8300636-01	Bowl Brush
9	39500	Socket Handle
10	39501	Socket Extension
11	39486	Socket, 15 mm (19/32")
12	39487	Socket, 21 mm (13/16")
13	39532	Clamp Plate - Pull Worm Quill Ball Bearing
14	37478	Bowl Spindle Lifter
15	39489	Ball Bearing Extractor
16	38544	Worm Wheel and Clutch Ball Bearing
17	39533	Worm Wheel Shaft Ball Bearing Jack Screw
18	39055	Friction Clutch Hub Extractor
19	37507	Bowl Top Lifter
20	8700506-80	Spindle Cap Nut Wrench
21	37477	Tubular Shaft Lifter
22	37480	Bowl Shell Lifter
23	39483	Ball Bearing Lock Nut Hook Spanner
24	32881	Bowl Shell Scoop
25	37471	Regulating Tube Wrench
26	38516	Coupling Ring Gear Wrench
27	38517	Coupling Ring Gear Wrench Pinion
28	38518	Gear Wrench Pinion Handle
29	36217*	Pinion Handle to Pinion Screw
30	38549	Bowl Emptying Pump

* When specially ordered